

WebReq

LABORATORIEREKVISITION

WebReq developed by

A coordination group consisting of private EHR-companies from DMDD (Danish Medical Data Distribution) and MedCom - The Danish Health Care Network.

Pilotprojects running the first WebReq trials are run in 4 Counties and one national laboratory, KPLL. All leading in EDI Health communication.

Laboratory system vendors are:

B-Data, Netlab and CSC-Datalab.

Contactpersons

MedCom, Danish Centre for Health Telematics

Ib Johansen, ijo@health-telematics.dk

Gitte Henriksen, ghe@health-telematics.dk

DMDD, Danish Medical Data Distribution

Erik Jacobsen, ej@multimed.dk

Biochemistry IT-system vendors:

B-Data, Michael Johansen, mj@b-data.dk

Netlab, Niels Hornum, nh@kpll.dk

CSC-Datalab, Michael Thomsen, mthomse2@csc.com



Danish Centre for Health Telematics

County of Funen

Rugaardsvej 15, 2. DK-5000 Odense C

Denmark

Telephone: +45 6613 3066

Web: www.cfst.dk

WebReq

LABORATORIEREKVISITION

WebReq
a new webbased
laboratory requisition
system



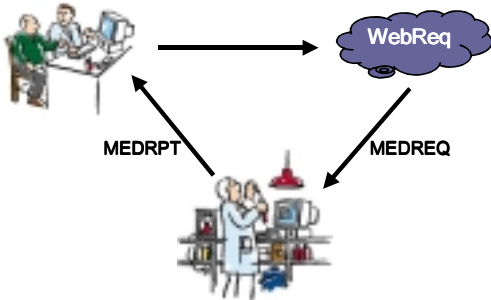
www.webreq.dk

WebReq

Development of sw solutions for electronic requisition of biochemistry tests is a great challenge and is very costly for EHR vendors.

To reduce these costs a webbased solution is developed and open to be used by everybody.

Web-based laboratory requisition

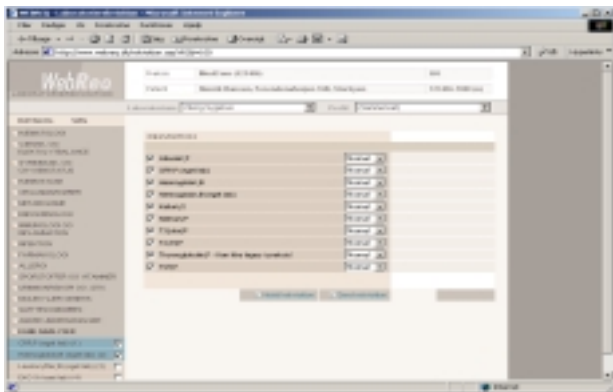


There are two different ways of using the WebReq:

- An integrated solution where the basic information about the GP's login and password as well as the patient name and ID are transferred automatically to the webservice.
- A semi automatic Mini - solution where the login and password are transferred using a simple html programme placed on the computer used, and manual typing of the patient ID and name.



Minikald.htm



WebReq requisition screen

How it works

When logged in and patient information is transferred the requisition can be done.

The WebReq solution offers a wide range of facilities as:

- Give access to all lab systems in the country without special programming.
- Can be used by all GP-EPR systems without extensive extra programming
- Prints individual barcode labels for the actual test tubes for the selected lab
- Use an international standard barcode label form used by all labs .
- Handle all specific sample and clinical information and present it for the user before sampling.

- It is cheap using the Internet.
- Just one version covering all scenarios.
- High degree of usability.
- Individual set up of test batteries for each GP.
- Usable for Hospital clinics having no EHR system.
- No updating routines needed by the user.
- Reuse of existing EDI solutions in lab systems.



Standard label form is printed with actual barcodes

Printing barcode and info labels

When all tests are ordered and clinical information is typed in, the system then automatically choose a sample label ID and a national barcode form in A5 format. It is printed out by a normal laser printer. Only labels for the selected tests are printed out together with handling information and information about the test tubes used and the labelling of each test tube.

Sampling can then be performed in correct labelled test tubes.



Sampling is easy and always in correct test tubes

Benefits

- Cheap, no special sw needed. No preprinted labels.
- High quality in sampling and pre analytic treatment.
- Just one national solution.
- Central updating of all relevant sampling information.
- Easy to use, configured to each users needs.
- High degree of security.
- Easy portable to other languages and needs.